

PULSE / M-BUS CONVERTER



DTP2-IP68



DTP2-DIN



DTP2-IP68 - DTP2-DIN

The DTP2-IP68 (or DTP2-DIN) device is a pulse counter for metering applications in SLAVE configuration on the M-Bus line able to acquire up to two reed inputs (potential-free - floating).

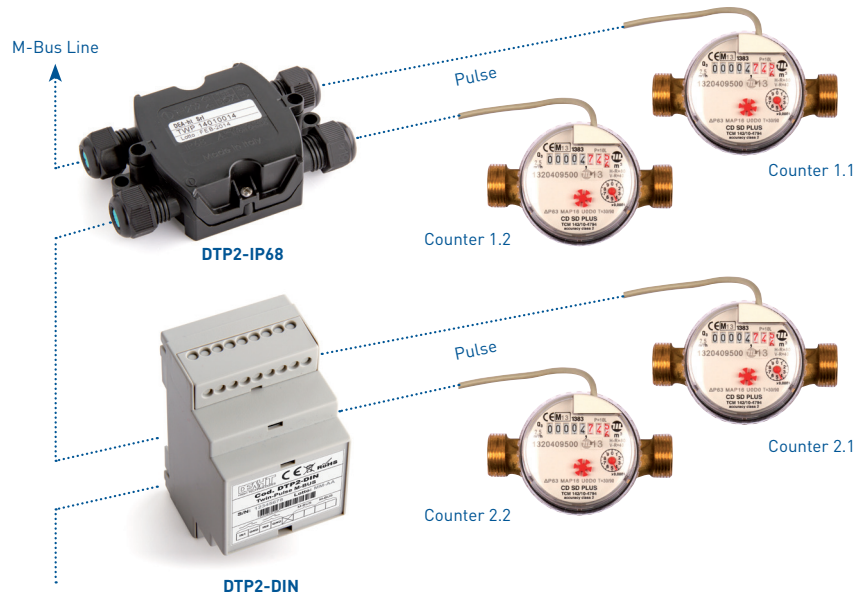
The DTP2-IP68 (or DTP2-DIN) device has a single primary address and a single secondary address for both counter inputs, thus greatly simplifying the installation procedure and reading management.

Available in the version inserted in the IP68 container and in the DIN Container

Each M-Bus line can be connected with 250 DTP2 (IP68 or DIN version) using the primary address as device ID. Each device can be connected to two counters for reading the same resource (water or electricity, etc). The DTP2 is able to detect readings with different measuring units (litres, cubic metres, etc), according to the M-Bus standard

Configuration: To configure/ activate the module it is necessary to have an M-Bus Master interface and its TWINCOM software. The TWINCOM software is compatible with Microsoft Windows version 2000, XP, Vista, 7 and 8.

The DTP2 is developed with Ultra Low Power technology that allows the device to work for more than one year without being powered by the bus, with the use of a simple button battery



| TECHNICAL SPECIFICATIONS | |
|-----------------------------------|---|
| Counter inputs | 2 inputs: J1 counter input, J2 counter input |
| Compatibility: | Reed, potential-free - floating |
| Max resistance of closed contact: | 10 KΩ |
| Max impedance of line: | C < 2.2nF with open contact |
| Min detectable duration of pulse: | 38 ms |
| Battery: | CR 2032 REPLACEABLE |
| Battery life: | 1 year with bus disconnected |
| Transmission protocol: | M-Bus standard |
| Supported Baude rates: | 300, 2400, 9600 bps |
| Secondary address: | 8 digit BCD stored in flash memory |
| Consumption: | 1.4mA |
| Contents of message: | Primary address Manufacturer ID Device type (water, etc...) Firmware revision no. Message no. Alarms and signals Unit of measure code Instantaneous reading in litres |
| Signals: | Battery autonomy < 1 month |
| Operating temperature range: | 0°...+55°C |
| Box sealing cat.: | IP68 or DIN |

The technical specifications and photos are purely indicative and the data must always be confirmed by DEA-ht S.r.l.